

Reverse to the Left

Purpose: To turn the vehicle around to face the opposite direction using a side road. This manoeuvre should only be considered when there is no other safer means of turning the vehicle around.

Location: Check that the location to carry out the manoeuvre is safe, legal and convenient.

Key points:

Observation: Looking mainly in the direction of travel you must be on the look-out for other road users (including pedestrians) throughout the manoeuvre.

Control: Keep to a slow 'old man's walking pace' using clutch control. This gives you time to make effective observations and maintain accuracy.

Accuracy: Reverse into the side road and straight back for some distance keeping reasonably close to the kerb throughout

Performing the manoeuvre: This can be broken down into the following steps (illustrated right):

1-2 Quickly assess the junction then carry out normal observations before moving off. As you are passing the side road check it is clear for you to reverse into.

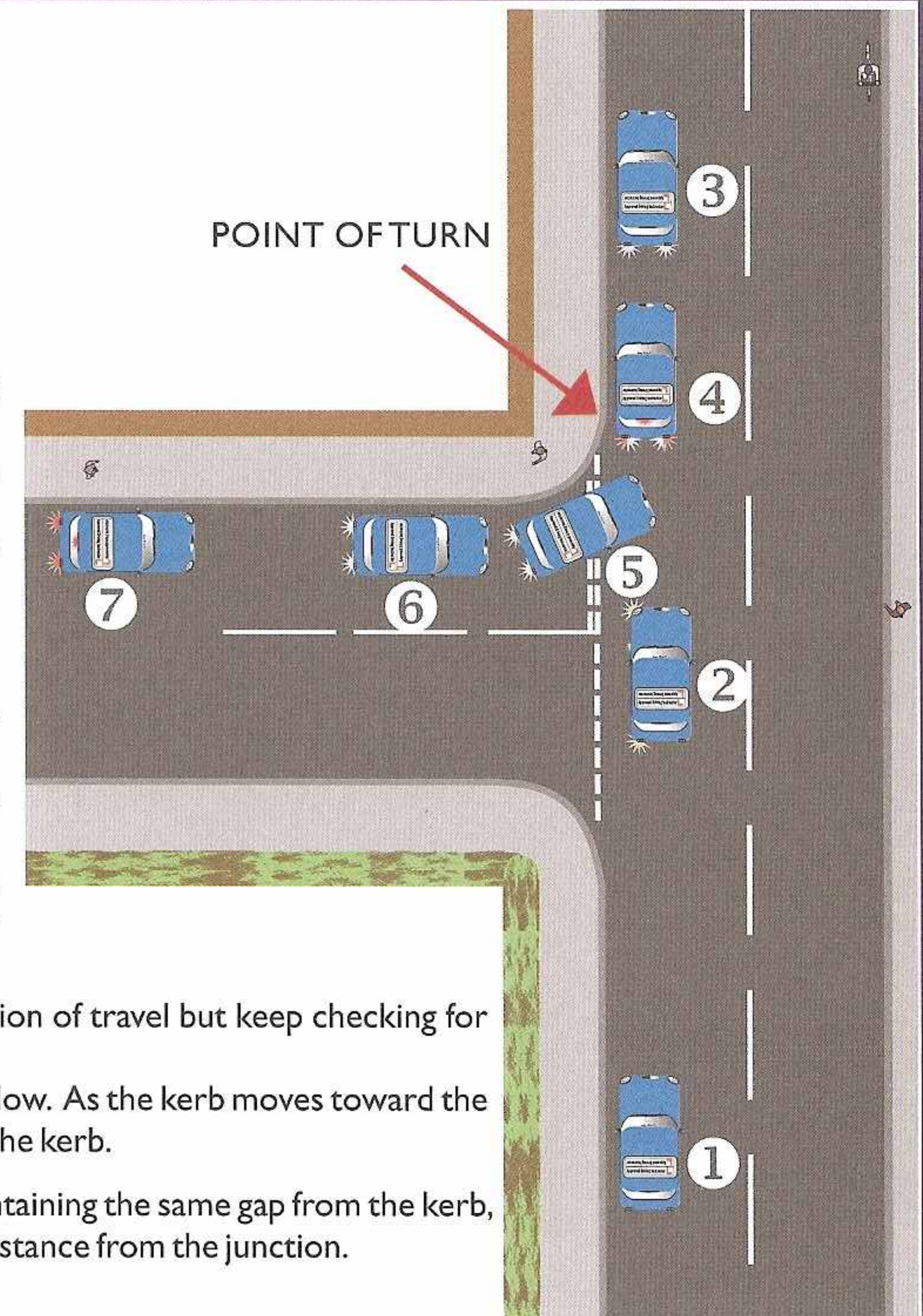
2-3 MSM to pull over just past the junction about ½ metre from the kerb. Secure the car and select reverse, this signals your intention to others.

3-4 Check all round, then looking out the rear window start to reverse if safe to do so. When your rear wheel reaches the point at which the kerb starts to bend (this is the 'point of turn') pause and check all round for other road users. These observations are vital as during the next step the front of the car will swing out into the road.

4-5 When safe start to move and steer maintaining the same distance from the kerb. Look mainly in the direction of travel but keep checking for other road users as you go.

5-6 Make final observations into the major road then look for the kerb appearing to the nearside of the rear window. As the kerb moves toward the centre of the window bring your steering straight and glance in your nearside mirror to check you are parallel with the kerb.

6-7 Continue to check all around as you reverse. Maintaining the same gap from the kerb, look well behind and keep reversing until you are a safe distance from the junction.



Quick Quiz

1. When in position 1 (above) what can we assess about the junction we are using for the manoeuvre?
2. Why is it especially important to make good all round observations at the 'point of turn'?
3. What should you do if there are pedestrians walking nearby?
4. If a vehicle approached from behind when you were at position 5 (illustrated above) what action should you take?