

# Crossroads

## Nearside/Offside Turning

Turning right can be a potentially dangerous manoeuvre, most notably at a crossroads. Crossroads are often accident black spots, so be cautious on approach. Look out for signs and road markings which may indicate who has priority. If you are approaching on the major road to turn right and you meet oncoming traffic also turning right there are two ways you can turn: Offside to Offside or Nearside to Nearside. Which of these two methods you use is usually dictated by: the layout of the junction; the position taken by the other driver; the road markings and the number of vehicles turning. Try and make eye contact with the other driver.

### Offside to Offside (Illustration 1)

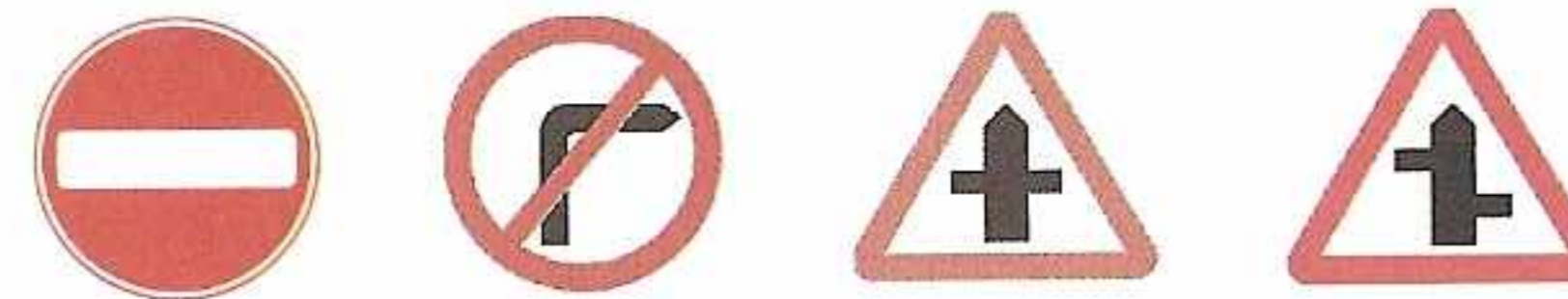
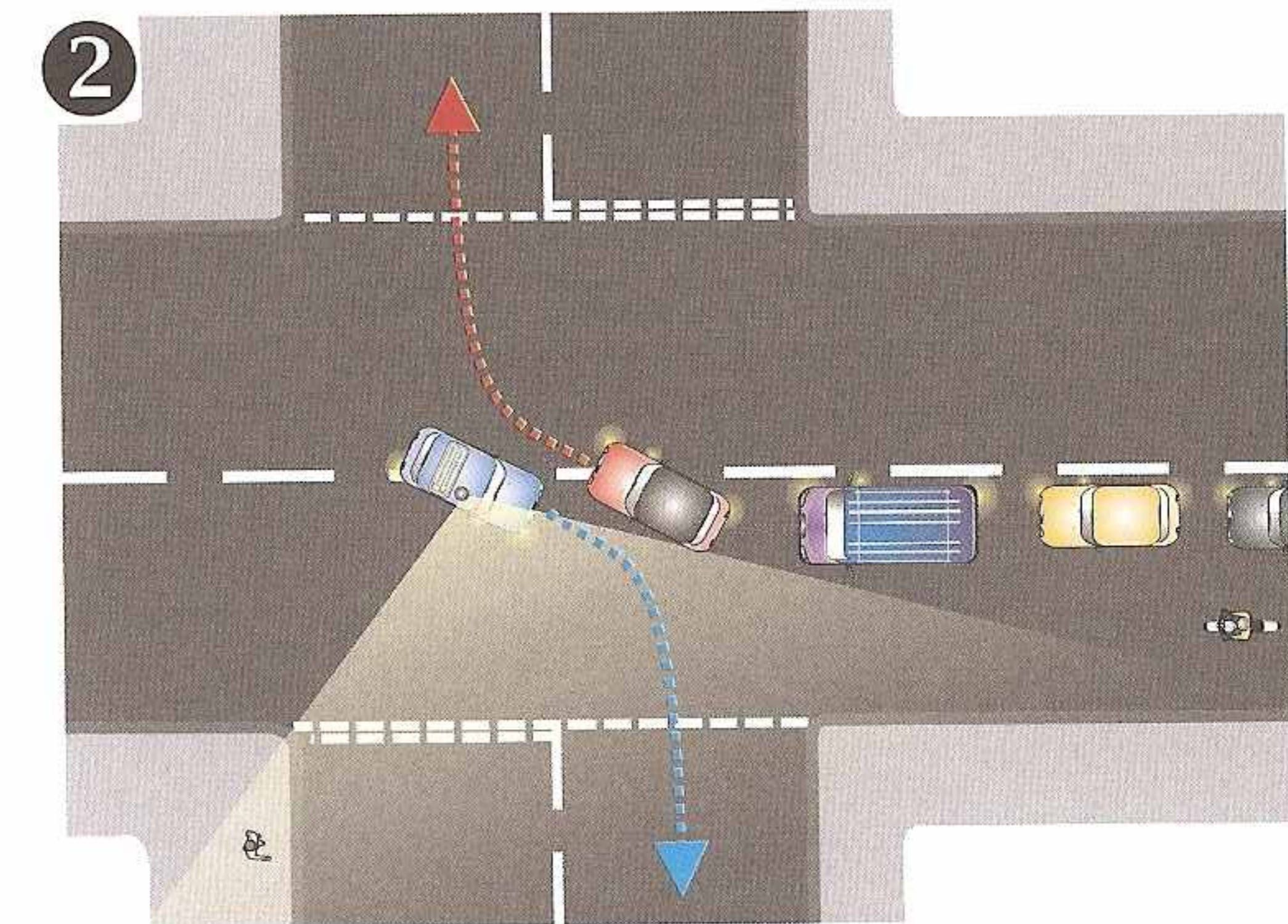
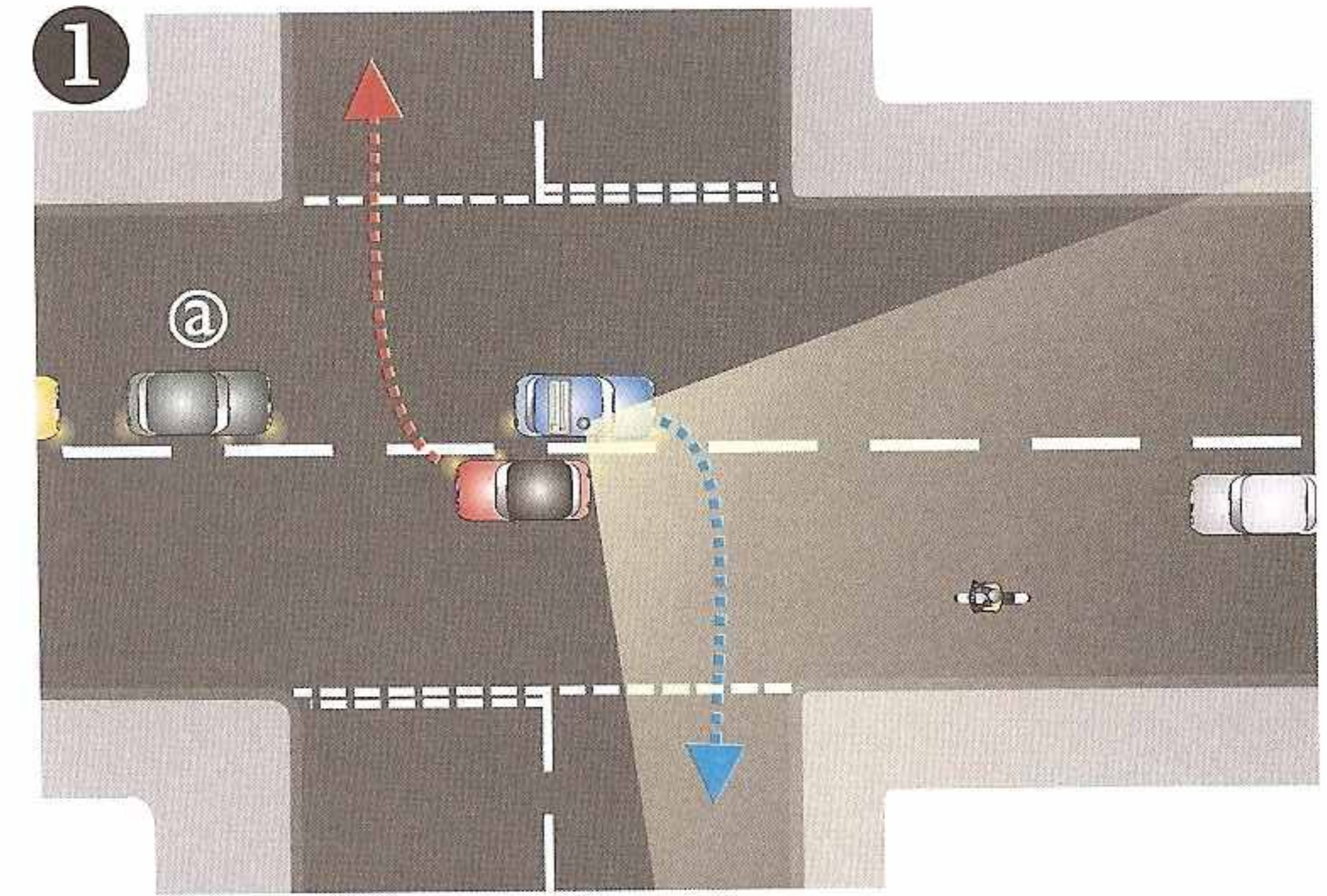
This is the safest way of turning as both vehicles have a clear view of the oncoming traffic. The 'zone of vision' is illustrated by the yellow shaded area. You must ensure you hold your position, left of the centre line, until you are sure it is clear to turn. If you start turning too early you will cause an obstruction to any oncoming traffic. This could cause them to stop or go wide to the left, which could endanger anyone passing on their left. If you are in a queue of traffic you should leave a space for approaching traffic to turn right.

### Nearside to Nearside (Illustration 2)

This method is less safe as your 'zone of vision' is restricted by the opposing traffic. Be cautious on approach and look out for oncoming vehicles which are hidden from view, especially motorcyclists and cyclists. If you don't know, don't go. This turning position does give you a clear view of the new road, remember to check for pedestrians who may be crossing. The main advantage in this method is that it allows the flow of traffic to continue to move, when the road is clear. At some busy junctions you may find road markings which make this method compulsory. If there are a number of vehicles turning right then this method could be the best option.

### Option 3

If in doubt as to which method to use, or of the intention of opposing traffic, then it is best to hold back in the position of the green car @.



## Quick Quiz

1. Why is it important to check your mirrors before you turn, and which ones would you check?
2. What other road users must you especially look out for before committing to turn?
3. True or false? Nearside to nearside is the safest way to turn.
4. What do the signs above mean?